



MONTHLY MEMBERSHIP PROGRESS REPORT

District 14 N

Results as of: 1/31/2017

GMT: Cindy Gregg

LOCATION PENNSYLVANIA

GMT CA

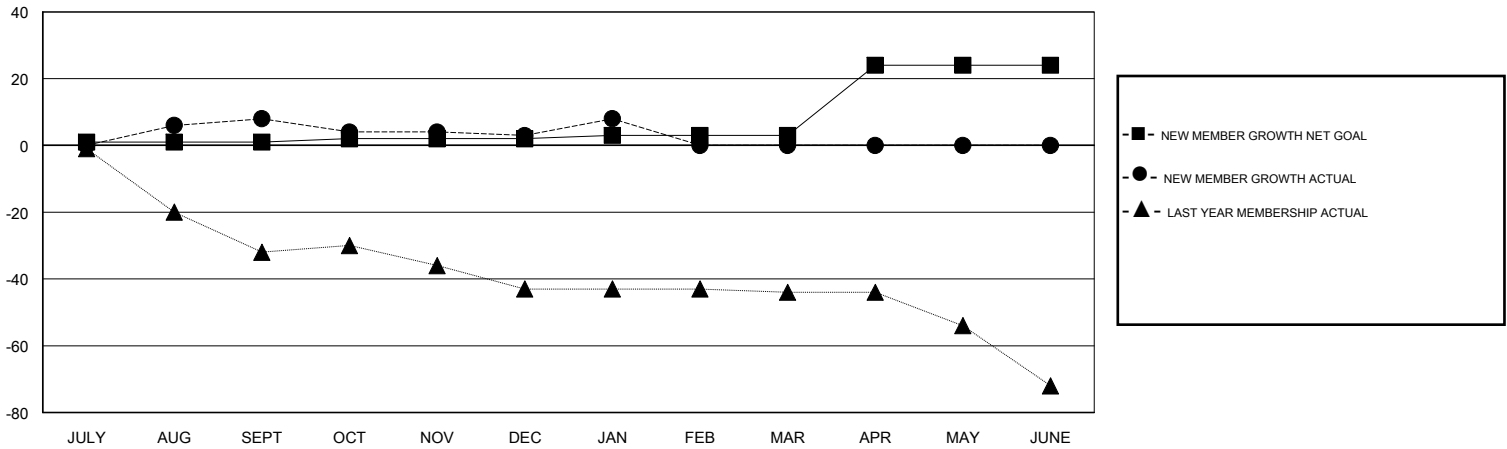
Clubs			
RESULTS FOR 2016-2017			
QUARTER	NEW CLUB GOAL	NEW CLUBS	DROPPED CLUBS
JULY/AUG/SEPT	0	0	0
OCT/NOV/DEC	0	0	0
JAN/FEB/MAR	0	0	0
APR/MAY/JUNE	1	0	0

Members			
RESULTS FOR 2016-2017			
QUARTER	NEW MEMBER GROWTH NET GOAL (not reinstated or transfers)	NEW MEMBER GROWTH ACTUAL (not reinstated or transfers)	DROPPED MEMBERS ACTUAL (including transfers)
JULY/AUG/SEPT	1	29	21
OCT/NOV/DEC	1	8	13
JAN/FEB/MAR	1	11	6
APR/MAY/JUNE	21	0	0

GOALS AND ACTUAL NEW CLUBS CUMULATIVE



GOALS AND ACTUAL MEMBERS CUMULATIVE



DROPPED CLUBS: 0	15 CLUBS OF 37 ADDED 1 OR MORE NEW MEMBERS	GENDER DISTRIBUTION
		MALE 724 (74.95%)
		FEMALE 242 (25.05%)
DROPPED MEMBERS	CLICK HERE FOR CUMULATIVE MEMBERSHIP DATA	TOTAL FAMILY UNIT MEMBERS 150
DECEASED 10		FAMILY MEMBERS PAYING HALF DUES 80
CLUB CANCELLED 0		
OTHER 30		
TOTAL 40		